



# Candy Cyclone™

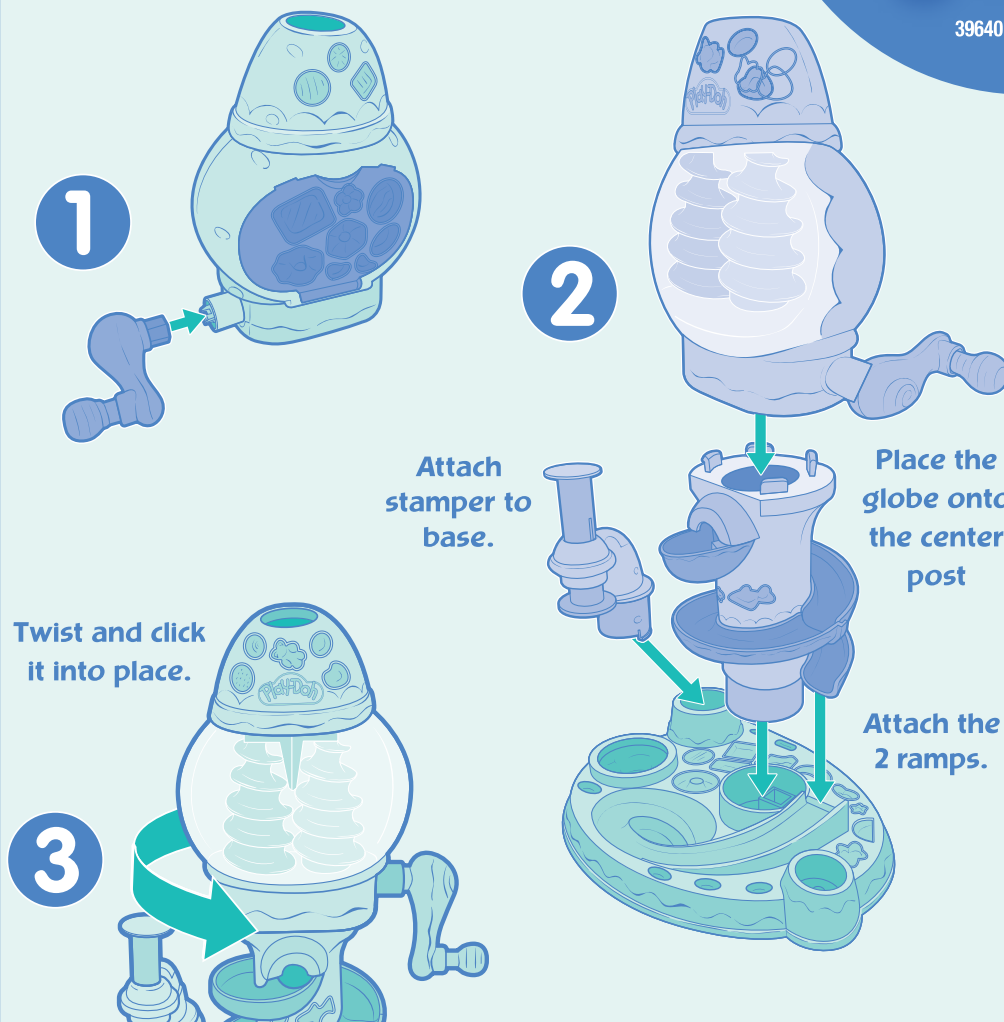


**CONTENTS:** CANDY CYCLONE™ playset with base, ramp, globe, crank and stamper, licorice presser, plastic knife, 2 dishes, 4 pop sticks and 4 two-ounce cans of PLAY-DOH Brand Modeling Compound (Net wt. 8 oz., 226 g).

**AGES**  
**3+**

39640

## Assembly:



Parents! Visit [Play-Doh.com](http://Play-Doh.com) for more Fresh Ideas!™

[www.Play-Doh.com/facebook](http://www.Play-Doh.com/facebook)

**NOTICE TO PARENTS:**  
**CONTAINS WHEAT.**  
NONTOXIC. CONFORMS TO ASTM D-4236.  
Adult assembly required.

**Fun to play with, but not to eat.**

Parents!  
Download the  
**FREE PLAY-DOH**  
**Play-Dates App**  
from the App  
Store!

Available on the  
**App Store**

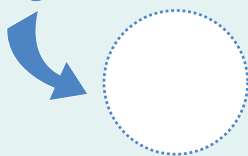


Get fun and easy Play-Date ideas including activities, crafts and snack recipes!

# Play:

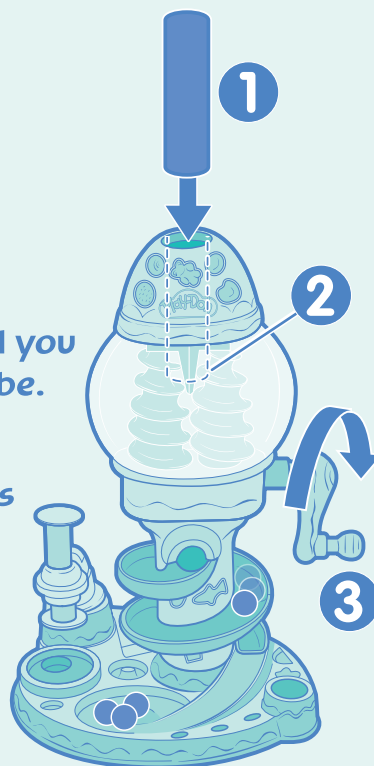
## How to make "gumballs":

- 1 Roll a compound log that is the width of the image.



- 2 Push the log into the globe until you can see the log through the globe.

- 3 Hold the globe with one hand as you crank out "gumballs" with the other!



**Note:**  
Playset will  
not work if  
you overfill it.



Questions? Call: 1-800-327-8264  
Fun to play with, but not to eat.



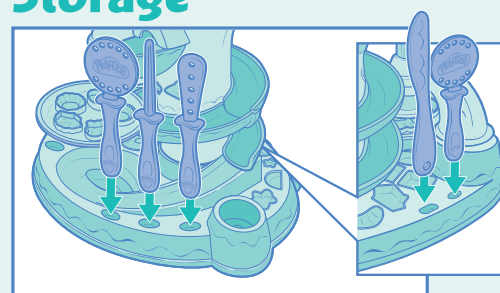
**Product and colors will vary.**

PLAY-DOH and the PLAY-DOH logo are trademarks identifying quality modeling compound products produced exclusively by Hasbro, Inc.  
© 2011 Hasbro. All Rights Reserved. TM & ® denote U.S. Trademarks.  
U.S. Patent No. 6713624 and patents pending. PN 7259000000 3964000000Asst.

## How to make "candies":

- 1 Place "gumball" in mold & press!  
Just spin the dish to create a  
different kind of "candy."

### Storage



### Troubleshooting:

Double check the width of your compound log. It should be  $\frac{3}{4}$ ". If you have trouble making a compound log, fill the globe with compound and push it into the globe with the plunger. The door must be closed for the playset to work. If gumballs get stuck, follow the cleaning tips below.

### Cleaning

Crank out the excess compound.  
Allow the remaining compound to dry.  
Detach globe.  
Open the back door and scrape away the compound with the thinnest "pop" stick.  
Shake out compound.  
Insert the plastic knife into the front slot and remove compound.  
Remove the compound from the gumball opening.